

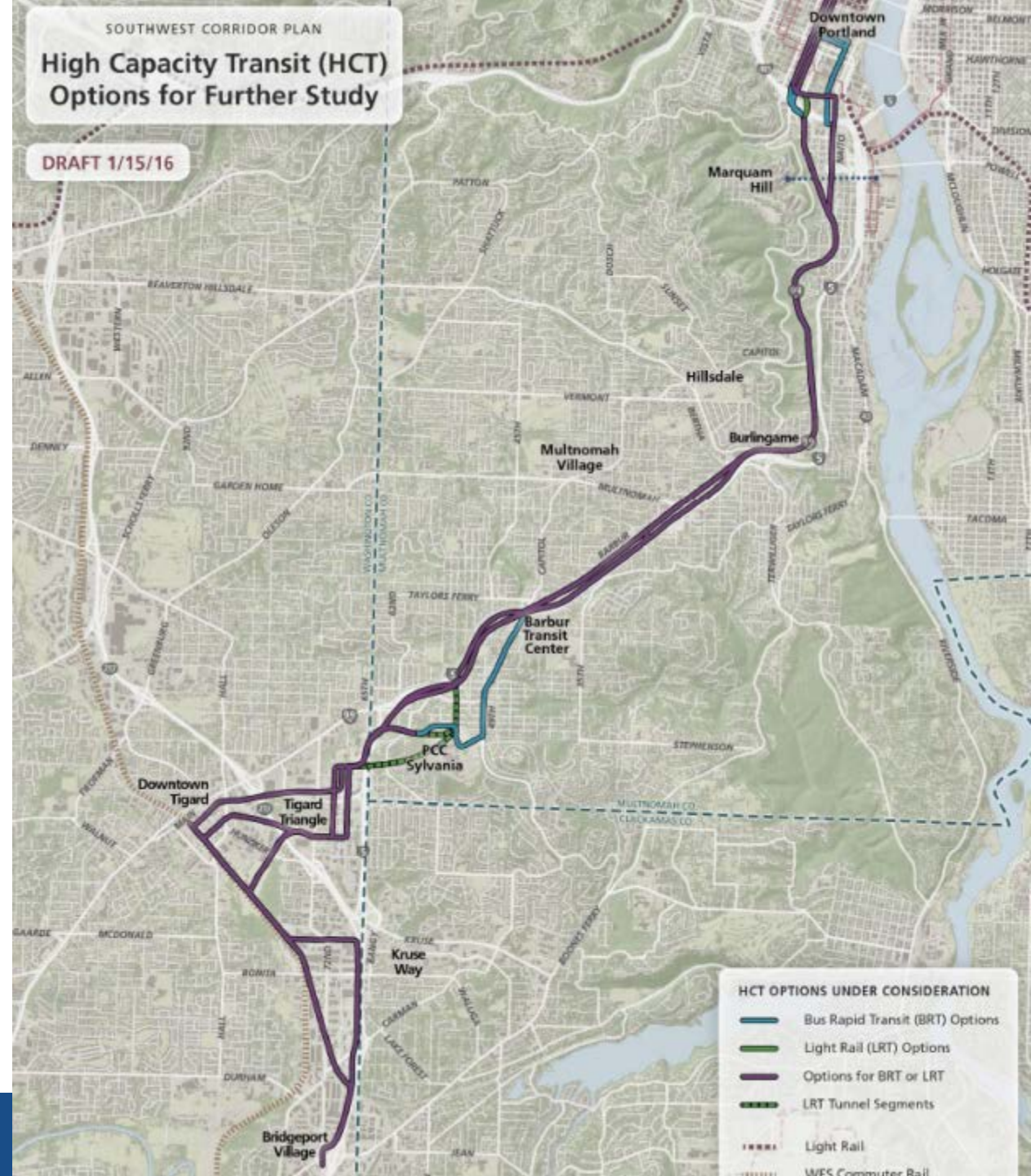
The Future of Transit & Transit Corridor Planning

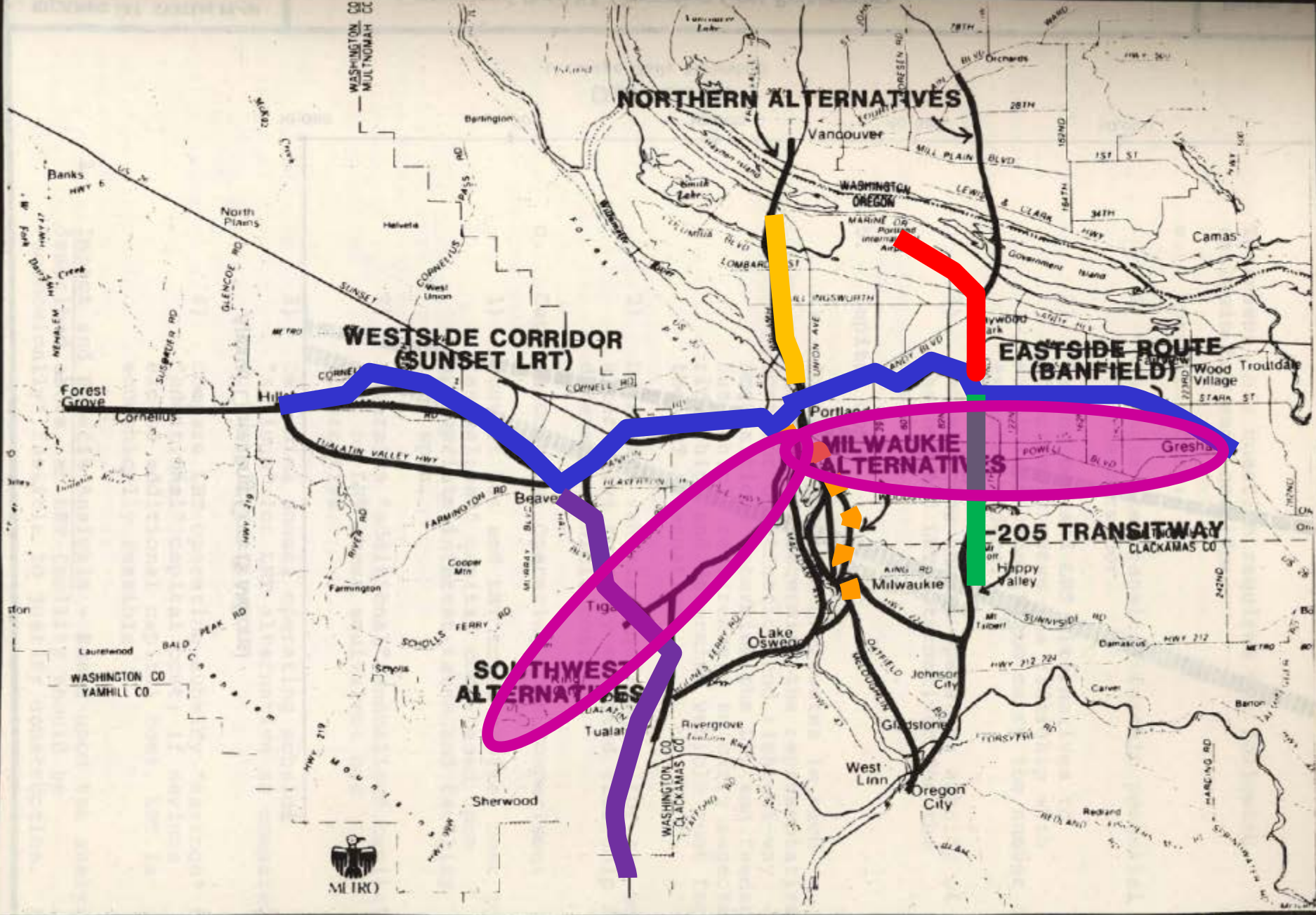


**New Partners for Smart Growth
February, 2016**

www.trimet.org/future

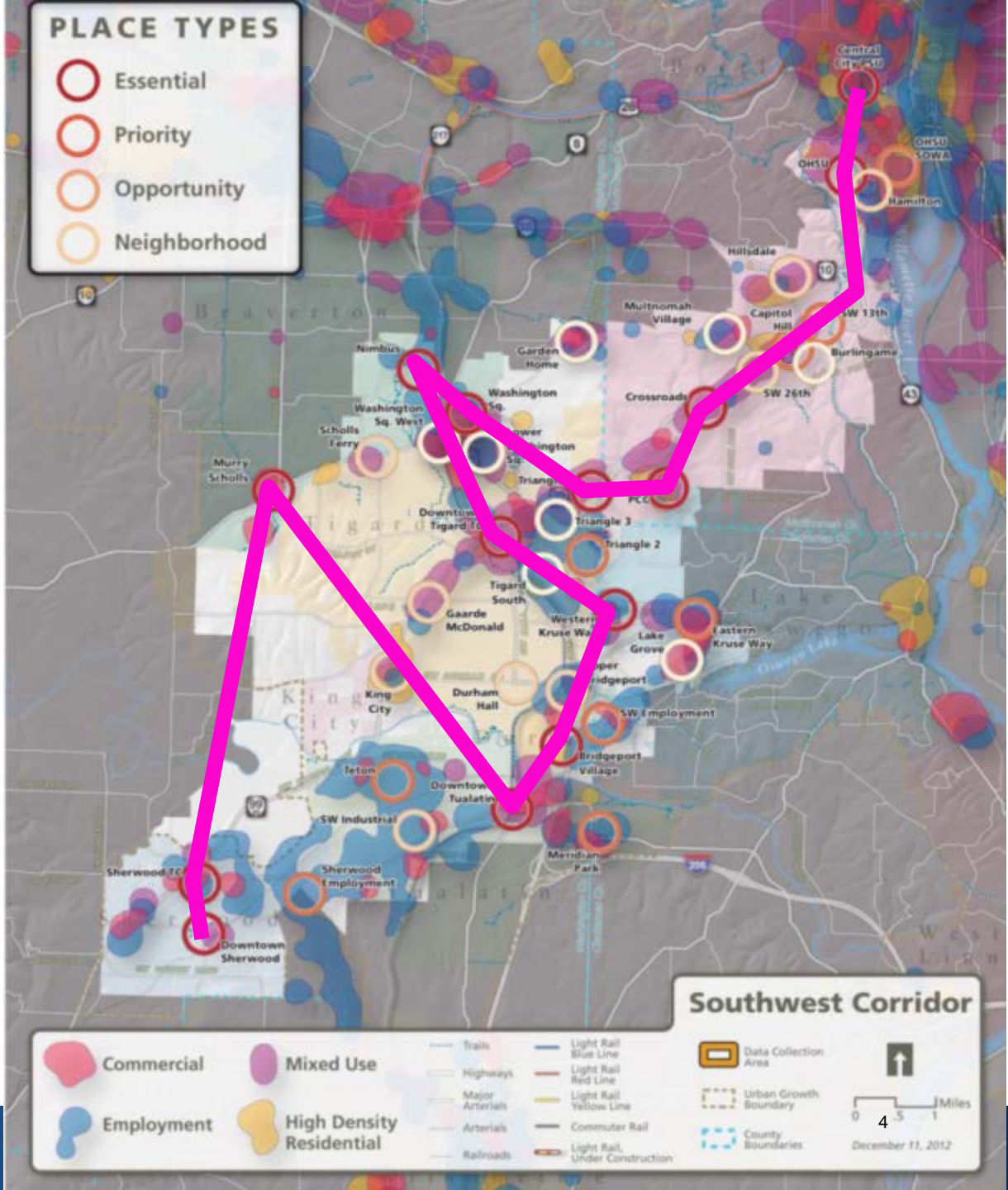
Southwest Corridor





Vision-Based Approach

- Barbur Concept Plan
 - Tigard High Capacity Transit (HCT) Land Use Plan
 - Linking Tualatin
 - Sherwood Town Center Plan
-
- The transit network is essential





Help make transit better in your community.

We want your input to help plan improvements to transit service, stops and crossings in your community. Between 2013 and 2015, TriMet is asking riders, residents, neighborhood groups, governments, schools and businesses for their feedback to create a long-term vision for transit service. Together, we will identify and prioritize opportunities to improve bus service as well as pedestrian and bike access to transit.



[Detailed Map PDF](#)



Service Enhancement Plans

A meaningful public engagement for creating a shared vision for making transit better



- Better serve the growing region
- More local and regional service
- Connections to jobs, education and services in communities and throughout the region

The Future of Transit Service Enhancement Plan



Status:

Westside:	Service Started
Southwest:	Completed
Eastside:	Revised Vision Phase
North/Central:	Revised Vision Phase
Southeast:	Draft Vision

The
Future of
TRANSIT

SOUTHWEST

Southwest SEP: Where We Are In The Process

Public Outreach & Research Existing Plans

Collect & Map Data

Determine & Share Common Themes

Draft Transit Service Vision & Partnership Opportunities

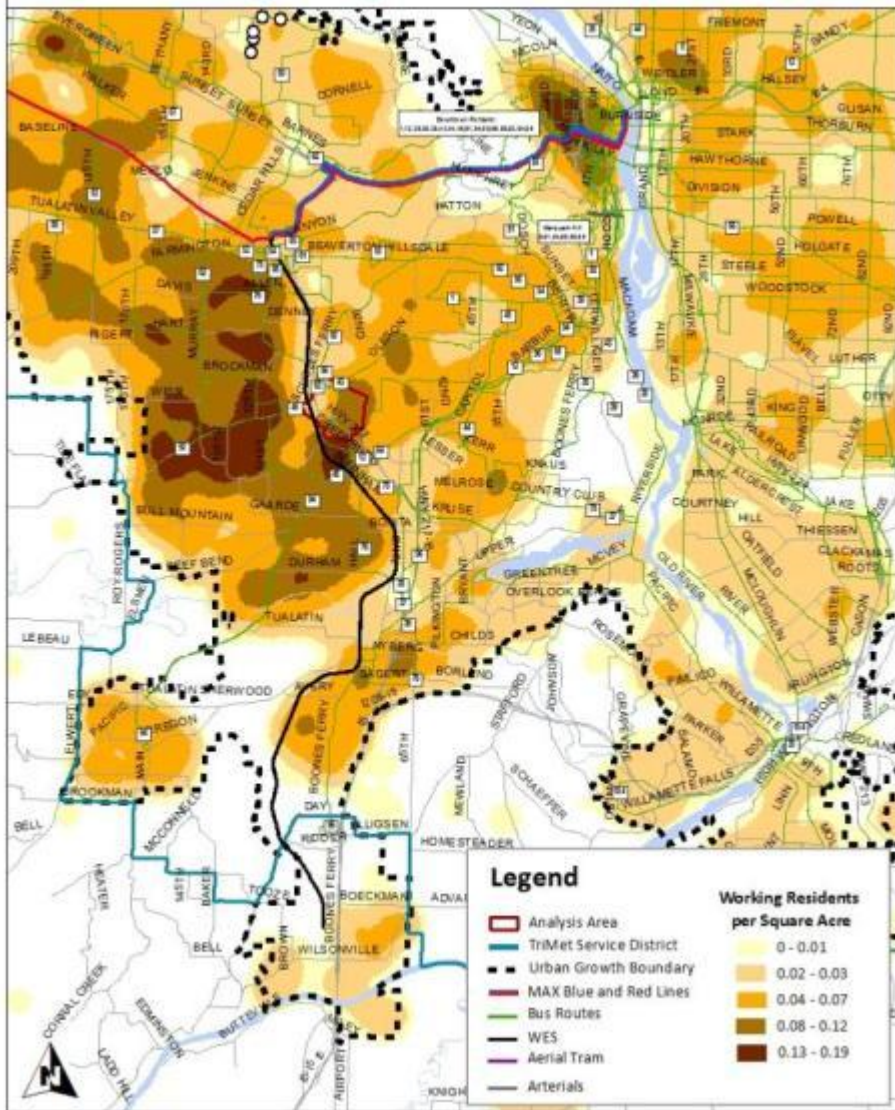
Gather Feedback

Refine & Finalize Transit Service Vision

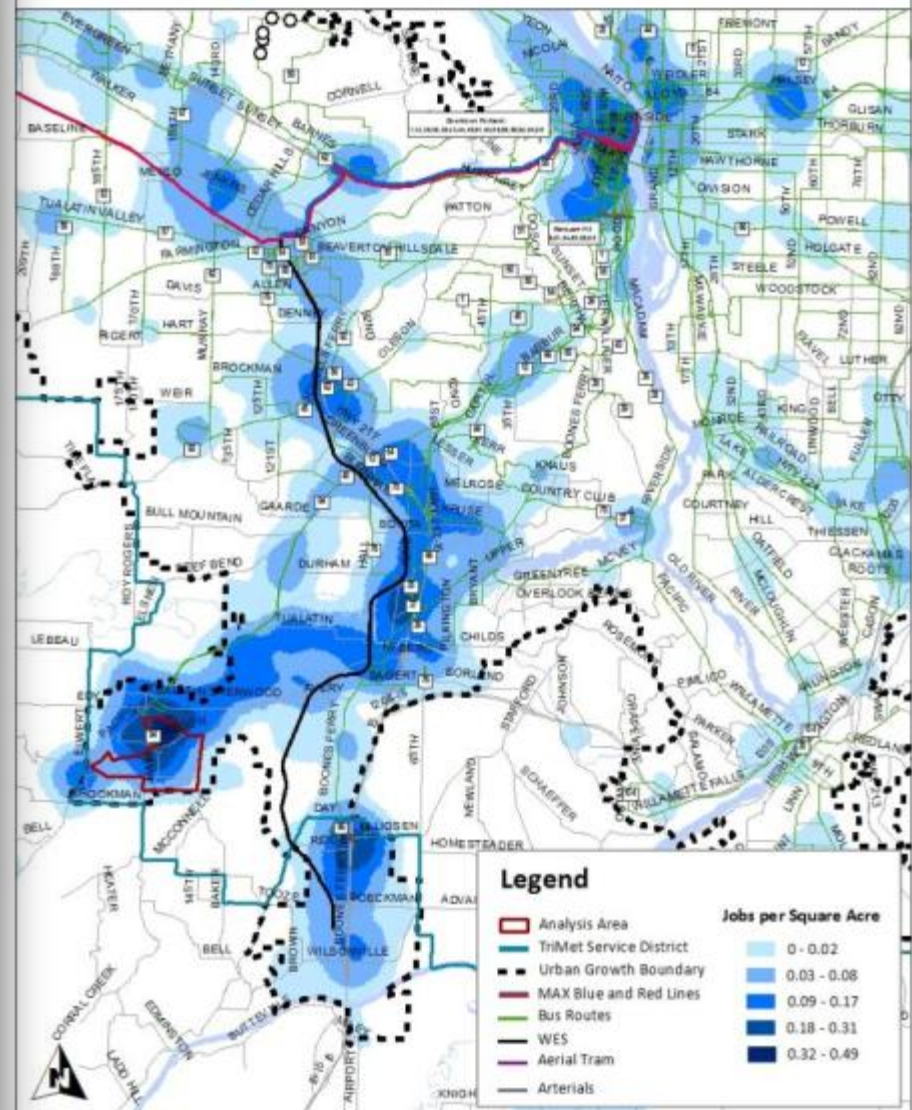
Publish Final Vision

Where People Live & Work

Where Washington Square Area Workers Live



Where Sherwood Residents Work



Outreach: Survey



Transit Survey

- Online & Hard Copy
- English/Spanish/Vietnamese
- Postcard/Email/Facebook
- Drawing for 10-Adult TriMet Passes

SWSEP Outreach – Community Meetings



☐ Community Meetings

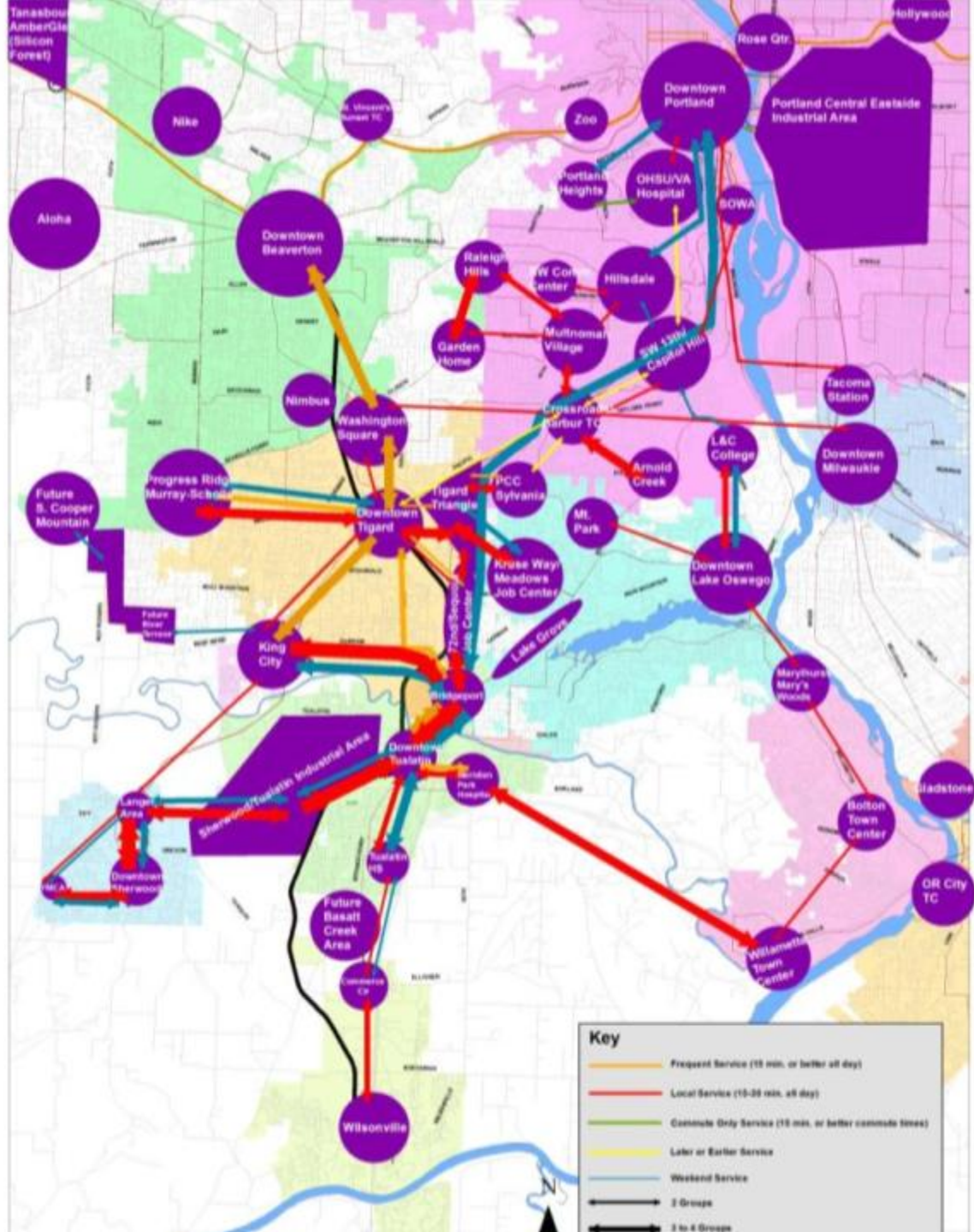
- Tigard
- Lake Oswego
- West Linn
- Sherwood
- SW Portland
- Tualatin
- Tualatin YAC
- St. Anthony's Church
- OHSU
- Neighborhood House^h

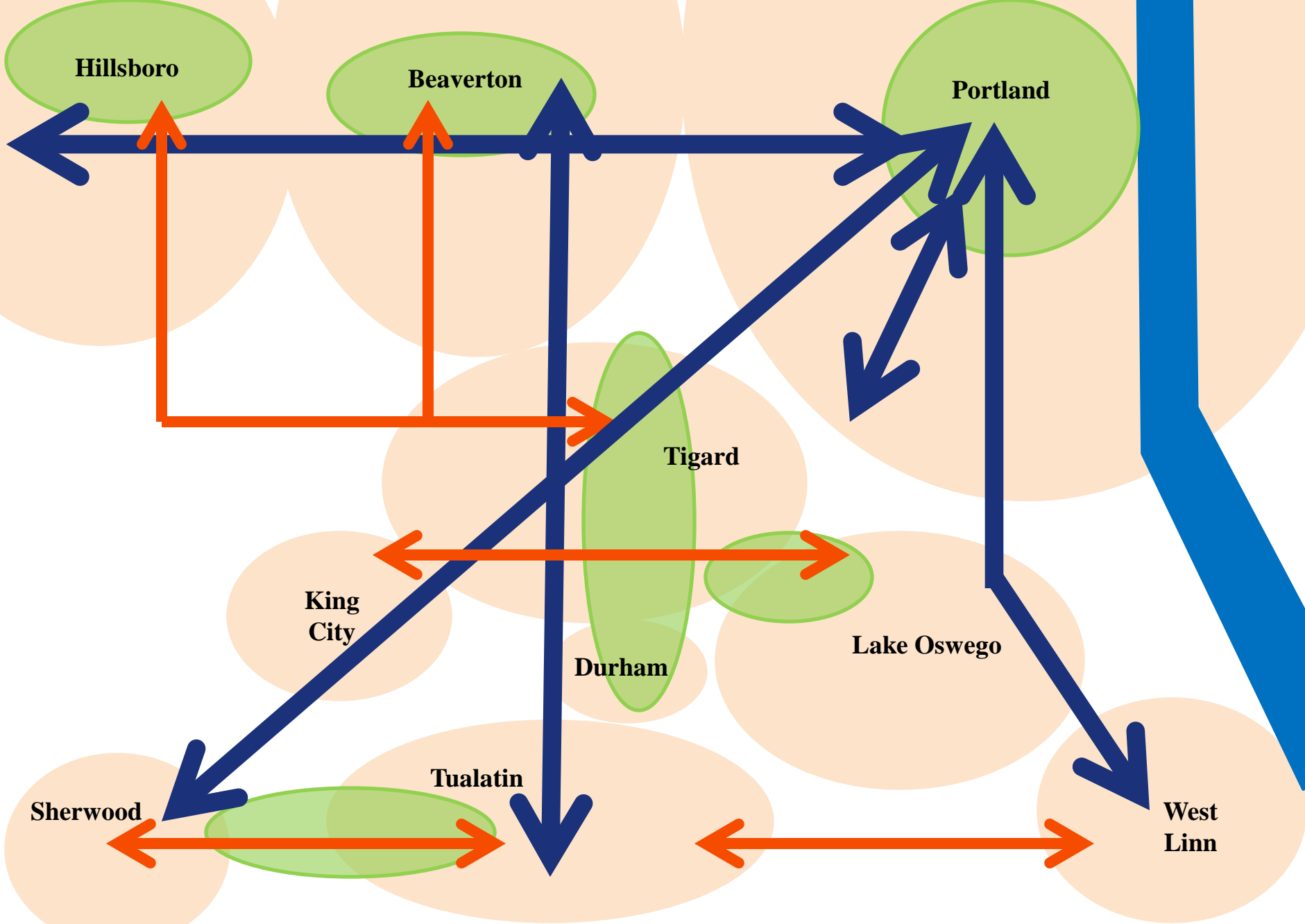
☐ Participation

- 200+ participated in community meetings
- 60+ different stakeholder meetings

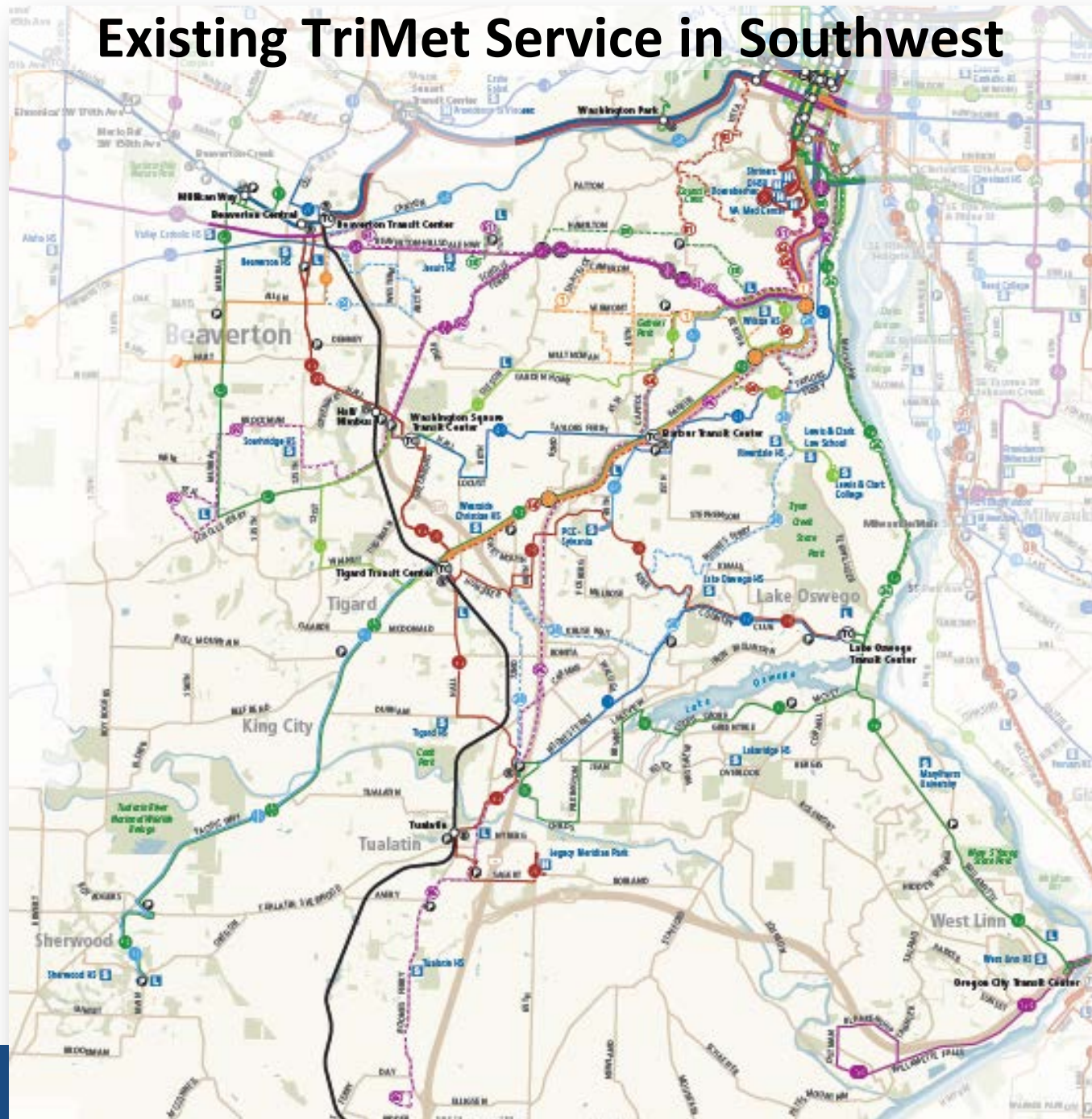
Service Planning Workshops



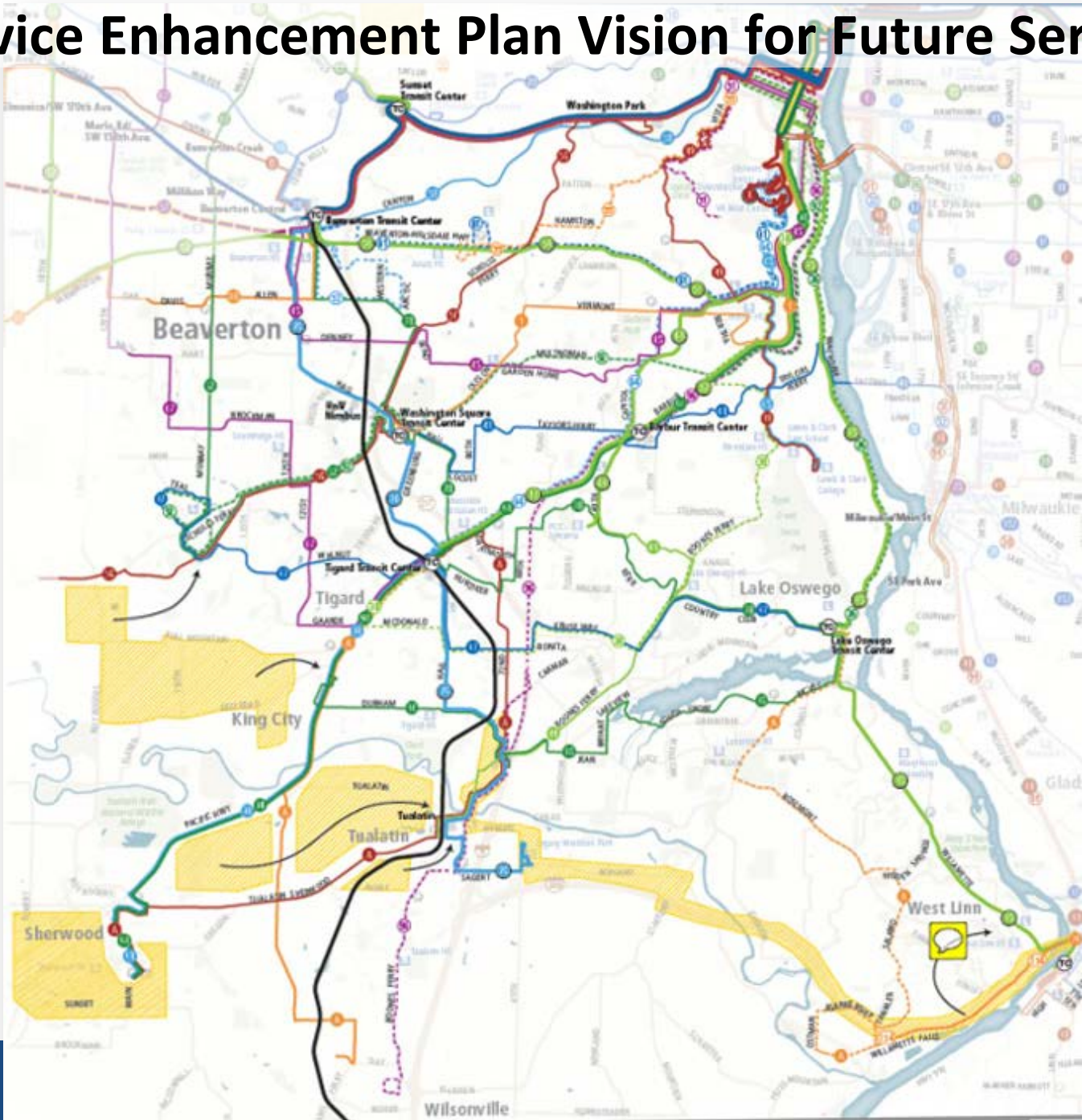




Existing TriMet Service in Southwest



SW Service Enhancement Plan Vision for Future Service



Community Connector Service

In Service Now: GroveLink



In Service Now: North Hillsboro Link





Help make transit better in your community.

www.trimet.org/future

We want your input to help plan improvements to transit service, stops and crossings in your community between 2013 and 2015. We are asking citizens, business, neighborhood groups, government, schools and businesses for their input to help us develop a vision for transit service. Together, we will identify and prioritize opportunities to improve bus service as well as pedestrian and bike access to transit.



Detailed Map PDF

Thank You

Alan Lehto

Director, Planning & Policy

503-962-2136

lehto@trimet.org

